

DL24/DL24P/BW150/BW600/BW600-DK

Electronic Load Software

--User Manual--



This electronic load software has design copyright, maintain originality, please do not plagiarize!

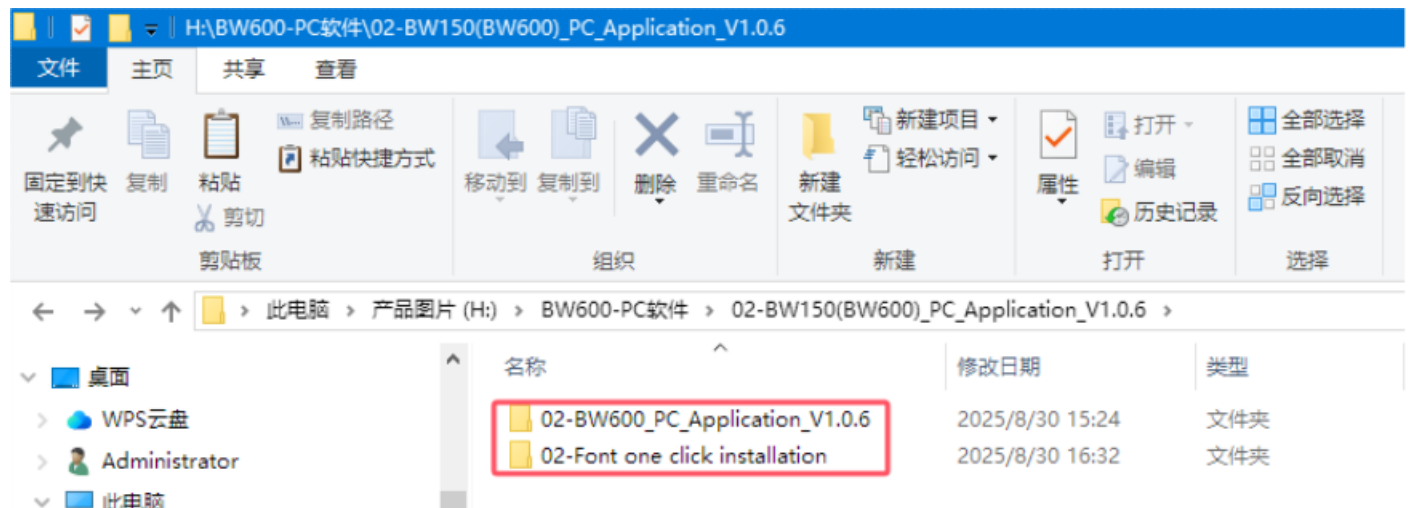
This software supports WIN7 and WIN10 computer systems!

Download link:http://en.atorch.cn/upload/file/BW600_Electronic_Load_Software

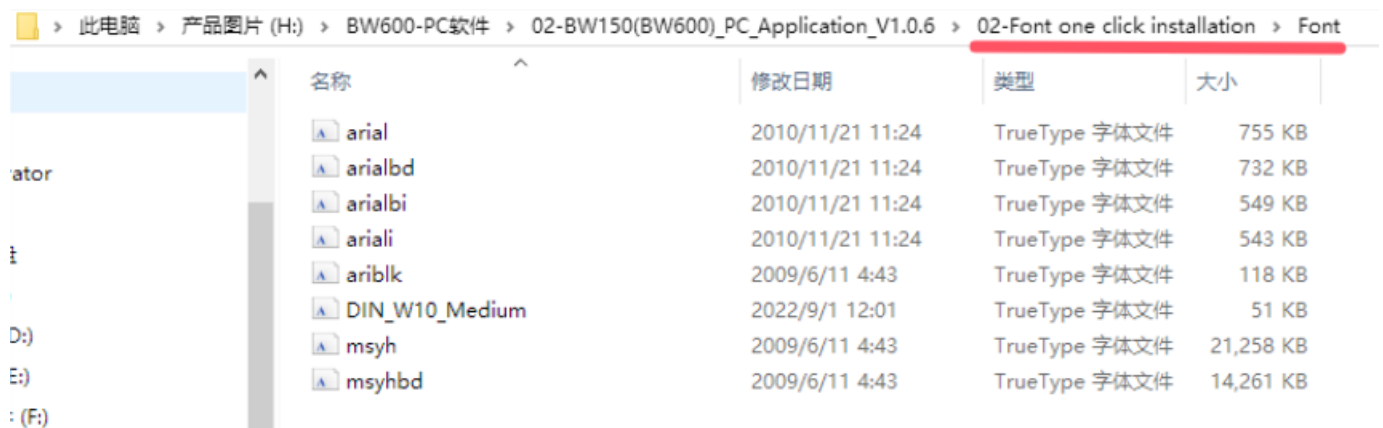
ATORCH@2025

1. Download the PC software from the above address and save it in one of

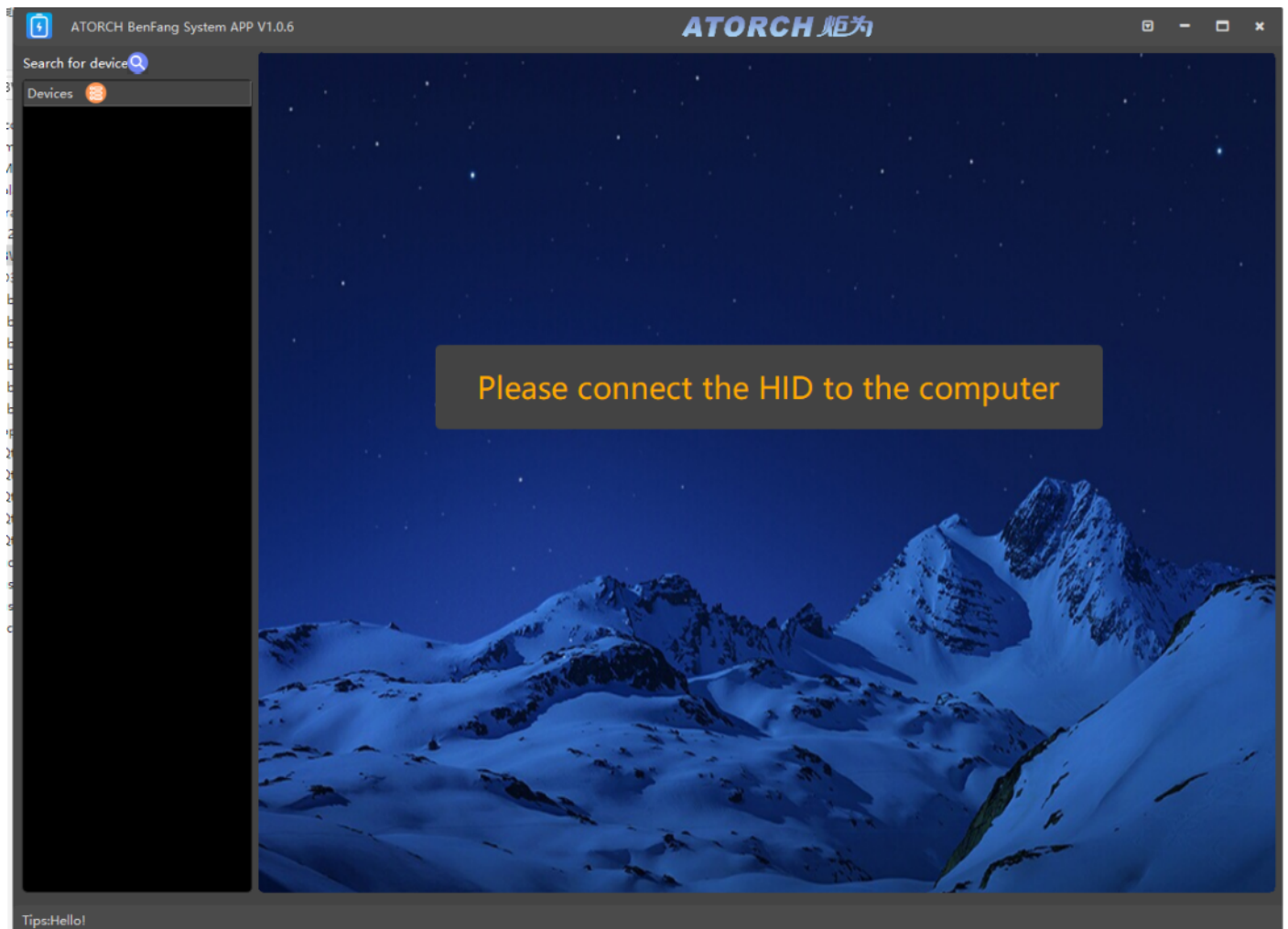
the drive letters on the hard drive



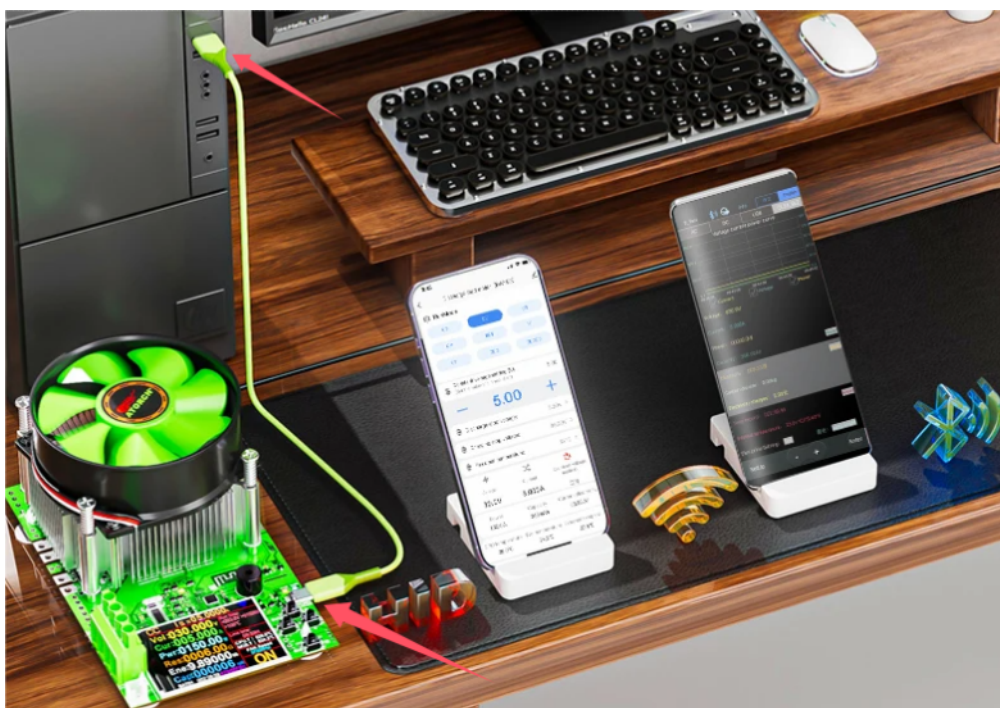
2. Before configuring the software, please configure the font to avoid missing font libraries in Win7 and Win10, which may cause confusion in the software interface!



3. After installing the font, open the software directly.



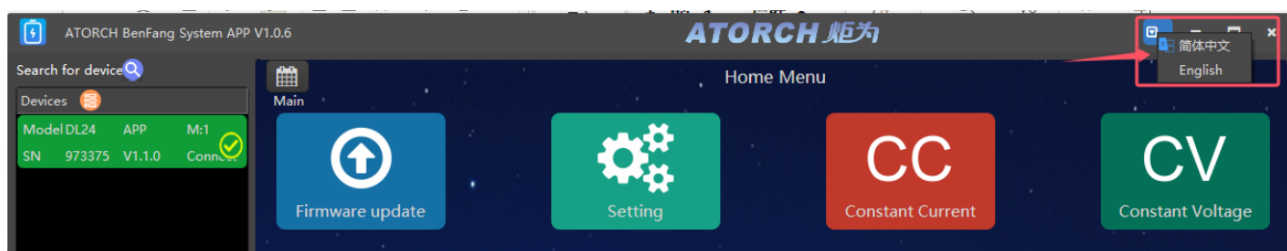
4. Please insert the HID cable between the electronic load device and the PC computer(The picture shows an example of BW150 electronic load)



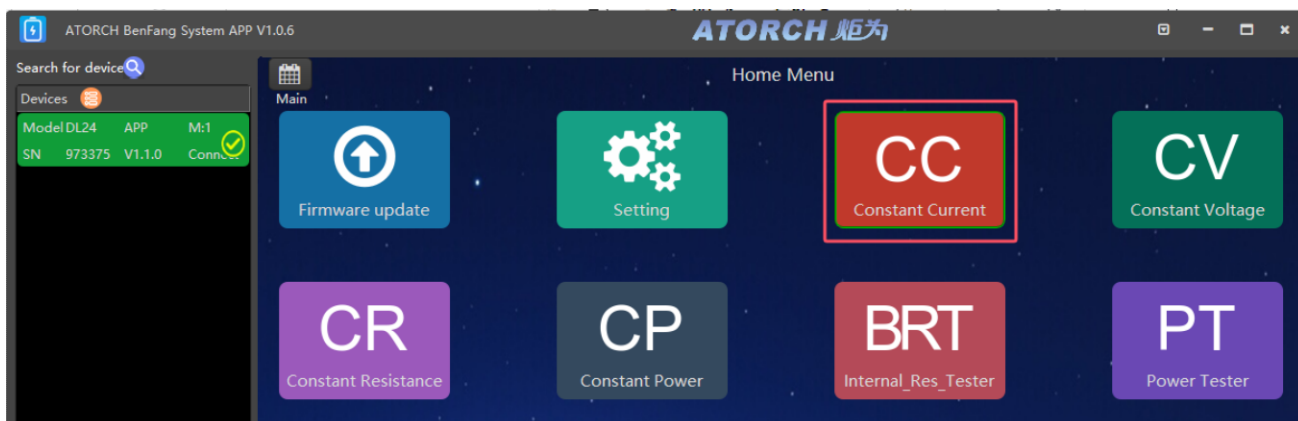
5. At this point, the PC software will scan the device and successfully display 'online'



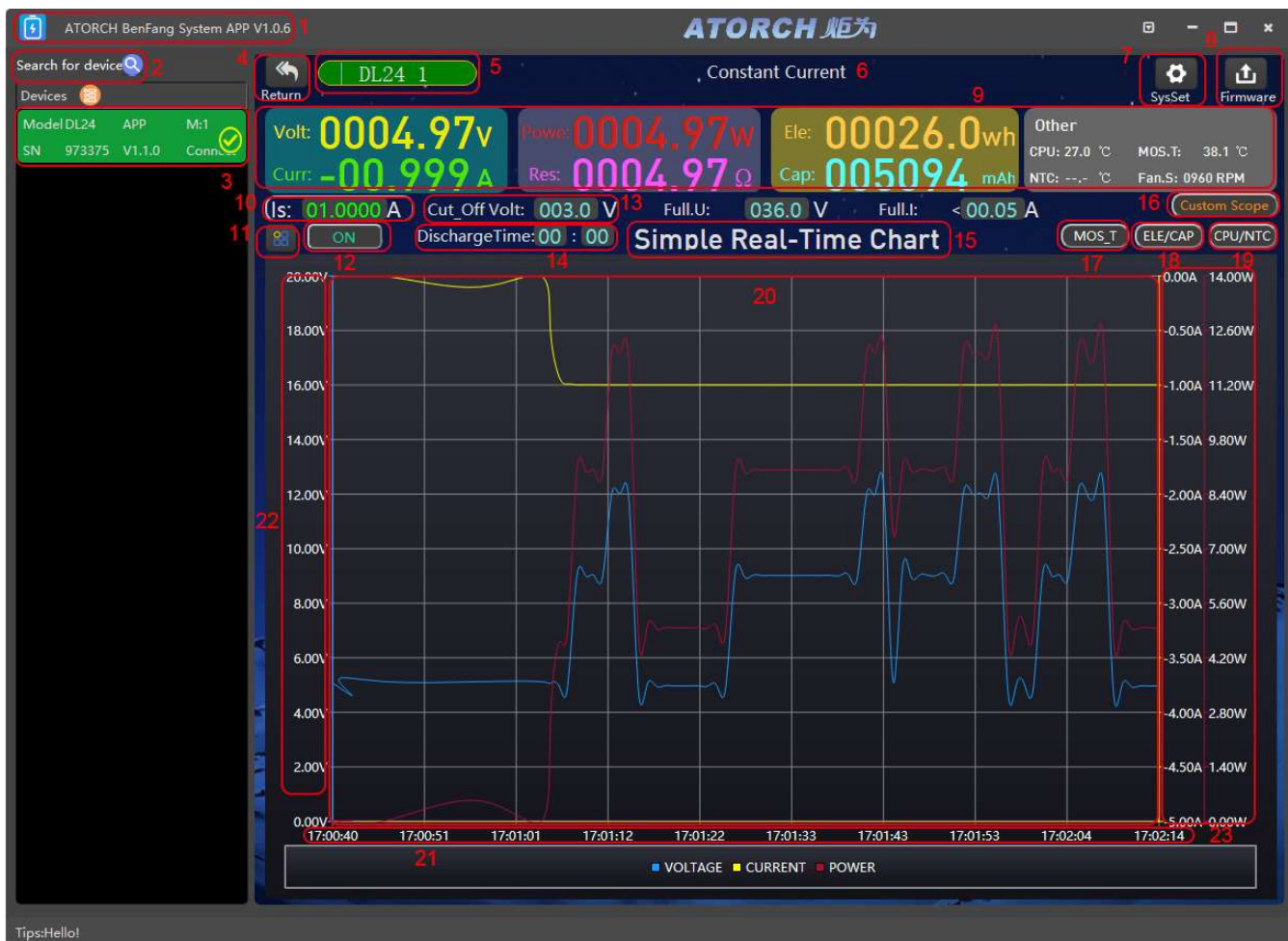
6. In the upper right corner, the software's Chinese/English display can be adjusted



7. Click on CC mode to enter the software testing page

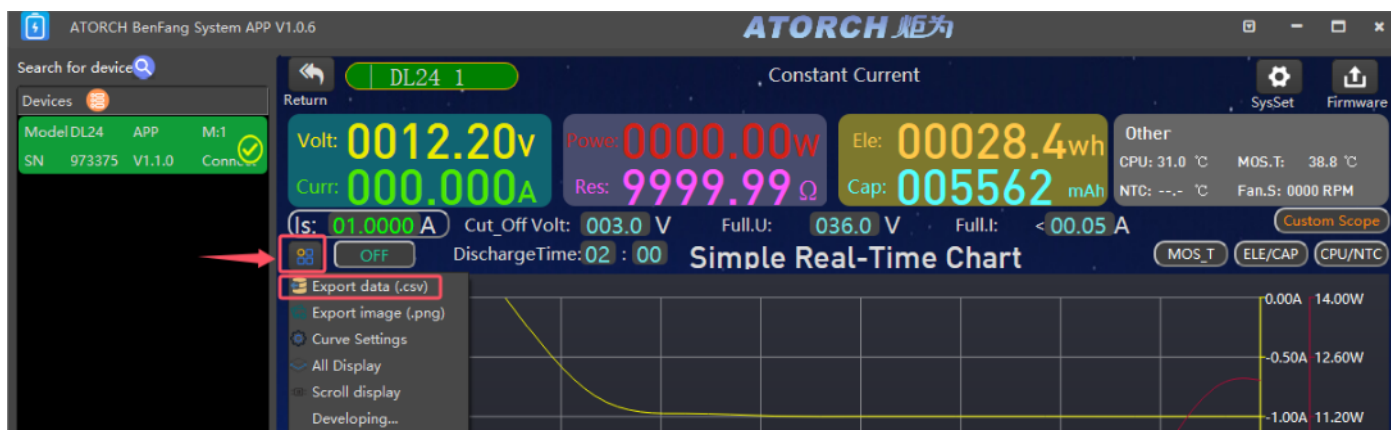


8. Overview of CC Mode Testing

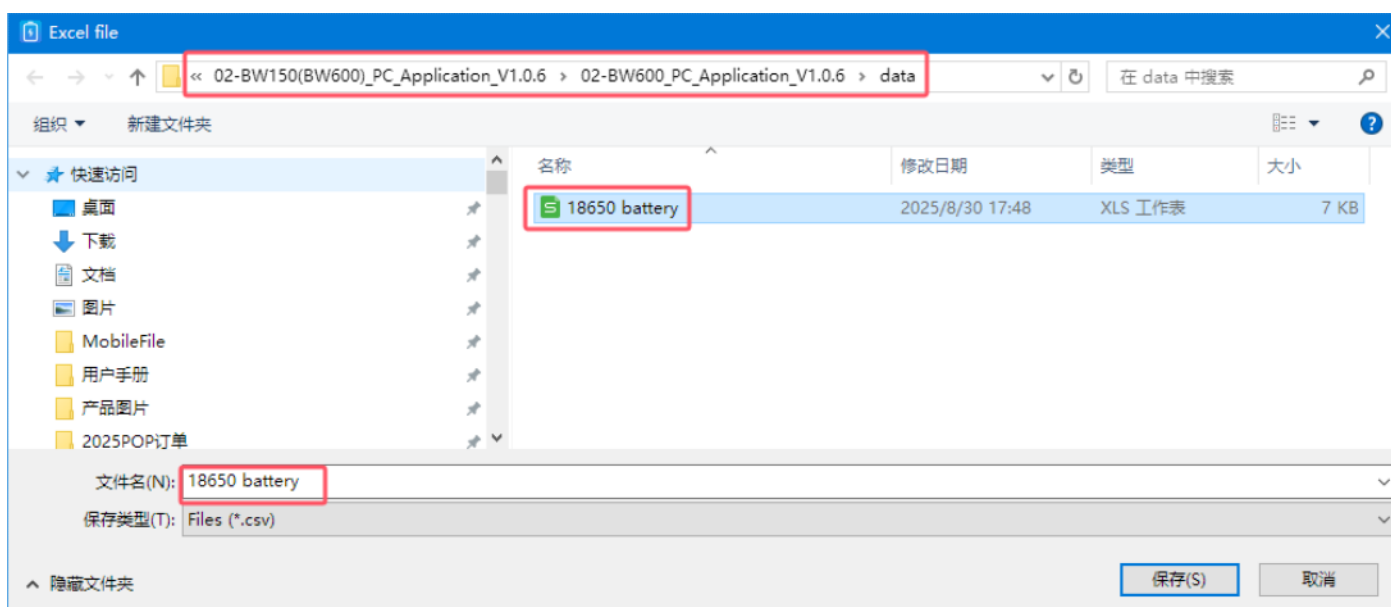


1. Software version number
2. Search for device
3. Successful online display information
4. Return to home page
5. Product version number
6. Current test mode title
7. System settings
8. Upgrade firmware
9. Instrument parameter display
10. Set current parameters
11. Function list
12. ON/OFF button
13. Cut off voltage setting
14. Time limit setting
15. Software title customization
16. Curve parameter customization
17. MOSFET tube temperature curve
18. Energy capacity curve
19. CPU/temperature curve
20. Current voltage power curve or other curve display area
21. Time axis
22. Voltage axis
23. Current, power curve axis

9. Export data: Please click on the function list in the figure to bring up the list, Export data(.CSV)



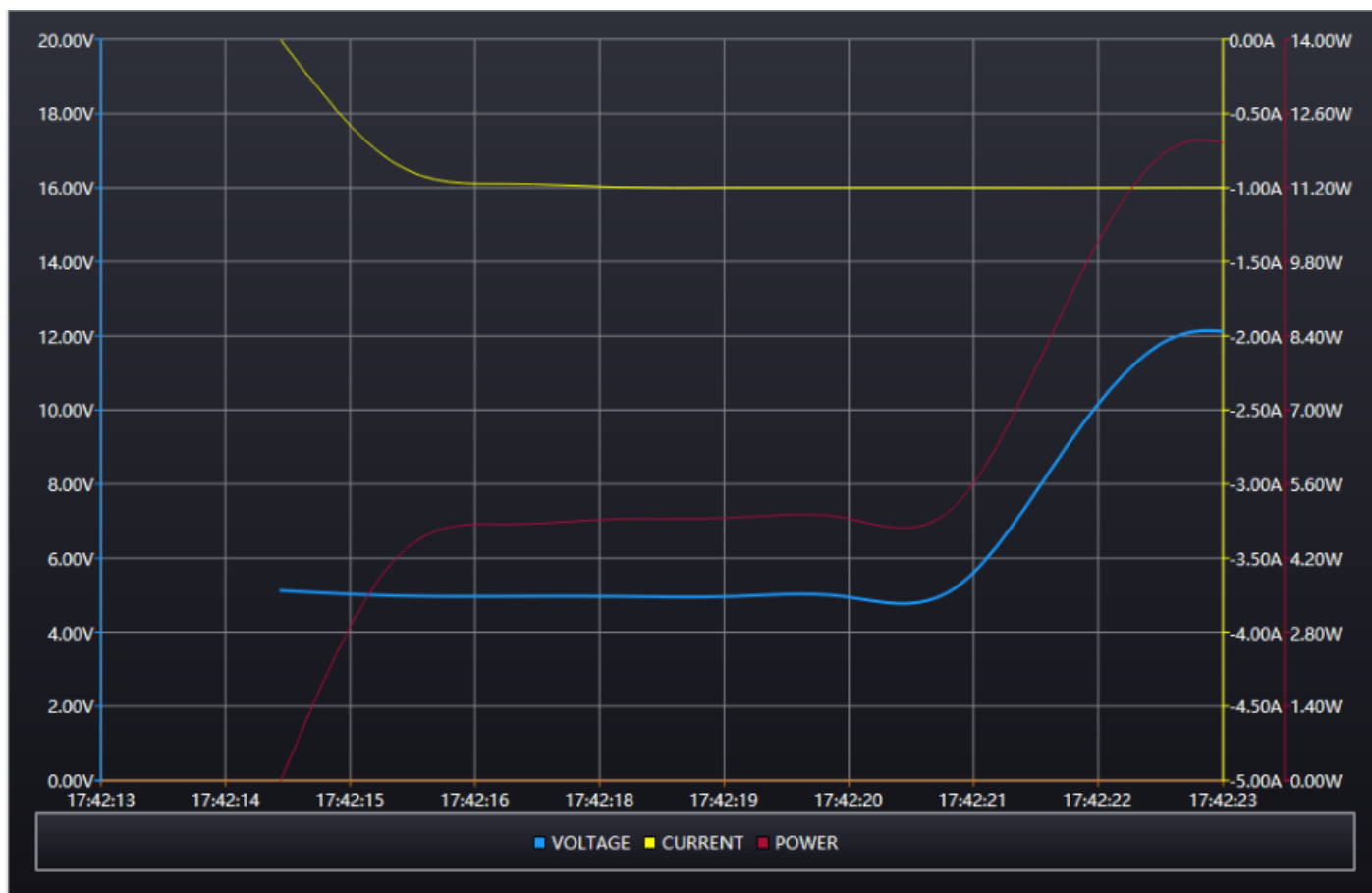
You can create a new data folder in the software directory, customize the file name for storing data, and save it!



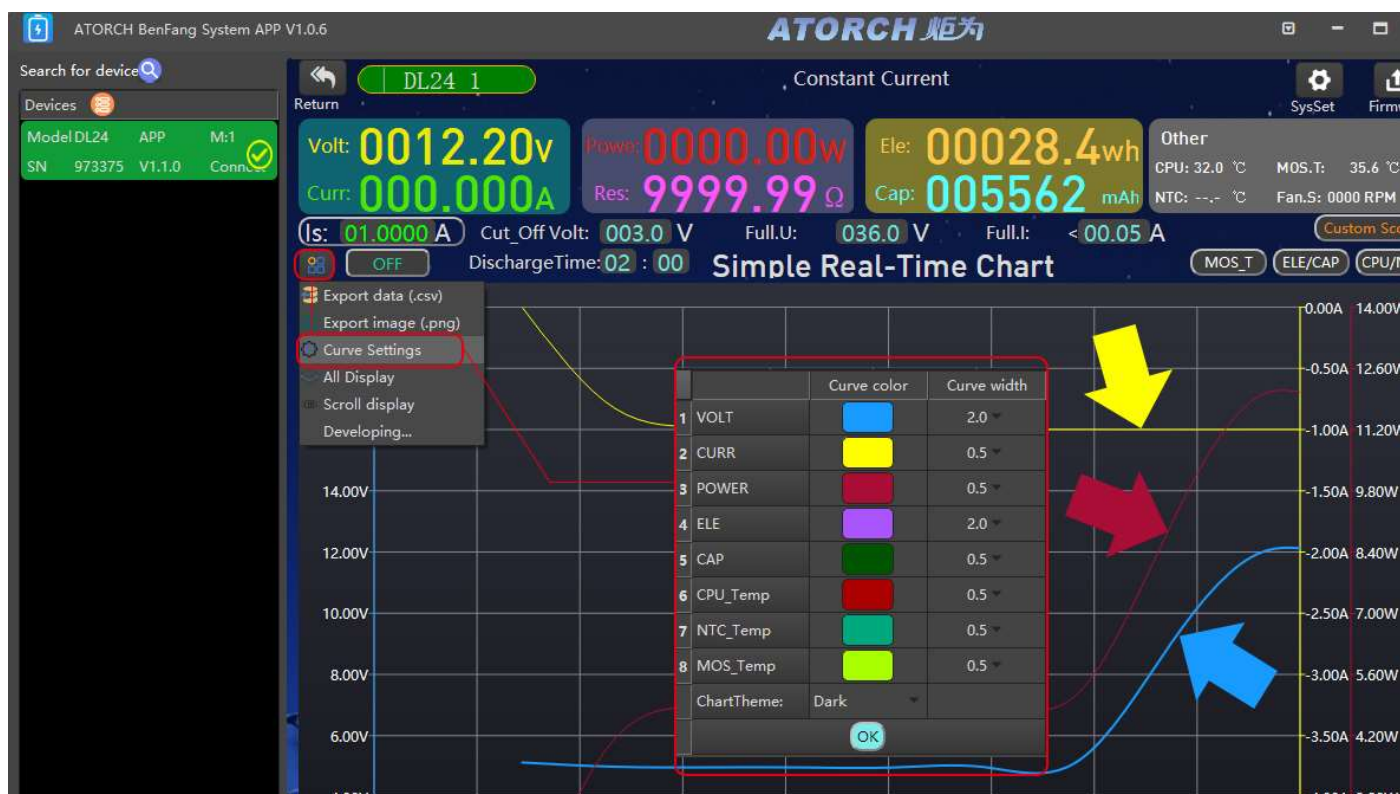
Open the .csv file you just saved with Office software, and you will see the following parameters!

DATE	VOLTAGE (V)	CURRENT (A)	POWER (W)	RESISTANCE (Ω)	E_QUANTITY (Wh)	E_CAPACITY (mAh)	NTC_TEMP (°C)	CPU_TEMP (°C)	MOS_TEMP (°C)	FAN_SPEED (RPM)
2025-08-30 17:42:15	5.123	0	0	9999.991	28.216	5545.435	32.587	30	35.193	0
2025-08-30 17:42:16	4.983	-0.828	4.137	6.014	28.217	5545.617	32.587	30	35.193	240
2025-08-30 17:42:17	4.963	-0.974	4.841	5.209	28.218	5545.883	32.587	31	35.297	570
2025-08-30 17:42:18	4.962	-0.996	4.939	4.984	28.22	5546.158	32.587	31	35.297	750
2025-08-30 17:42:19	4.96	-0.999	4.959	4.961	28.221	5546.436	32.587	31	35.297	870
2025-08-30 17:42:20	4.966	-0.999	4.967	4.964	28.222	5546.714	32.587	31	35.297	900
2025-08-30 17:42:21	5.181	-0.999	5.179	4.969	28.224	5546.992	32.587	31	35.297	930
2025-08-30 17:42:22	9.019	-1	9.027	9.011	28.226	5547.27	32.587	31	34.985	960
2025-08-30 17:42:23	12.018	-0.999	12.017	11.984	28.229	5547.548	32.587	31	35.297	930
2025-08-30 17:42:24	12.02	-0.999	12.019	12.024	28.233	5547.825	32.587	31	35.297	960
2025-08-30 17:42:25	12.023	-0.998	12.019	12.03	28.236	5548.103	32.587	31	35.297	990

10. Curve images can also be exported: Please click on the function list in the figure to bring up the list, Export image (.png)



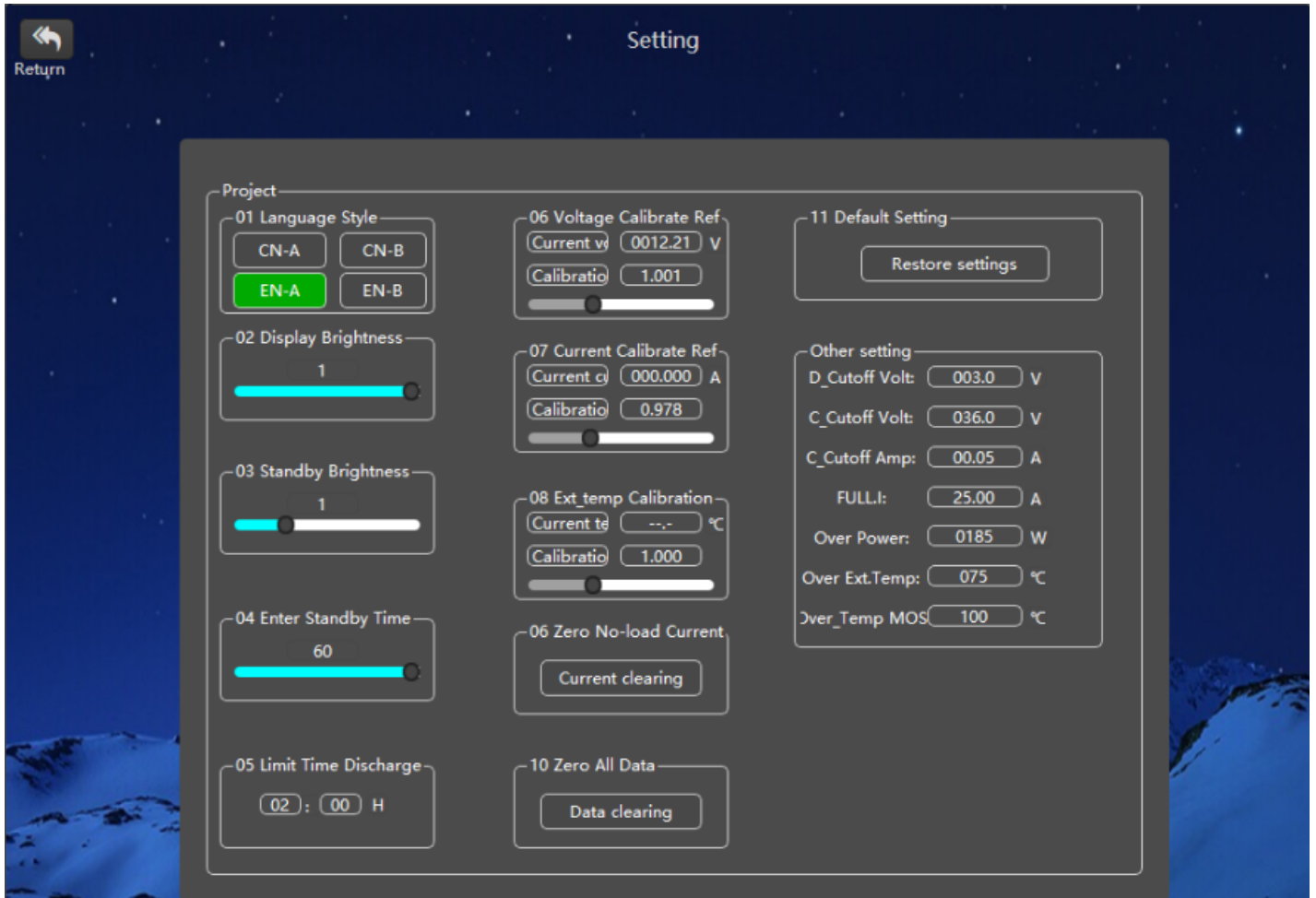
11. Function List>Curve Settings: This function can adjust the thickness (0.5-3.0 size setting) and color of curves



12.System settings

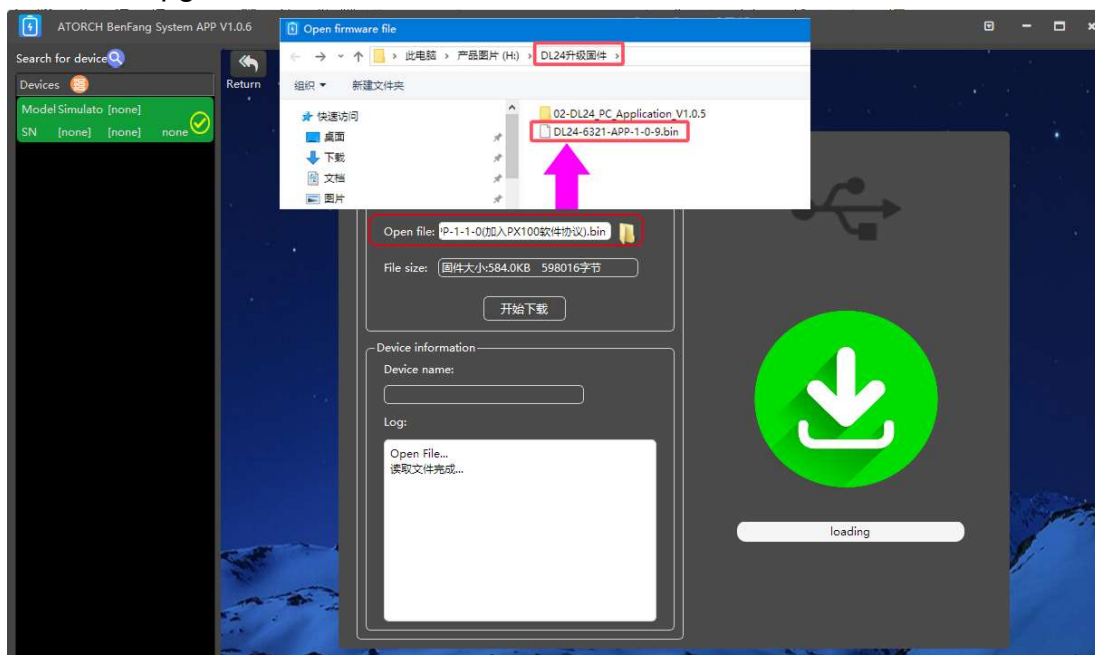
(Note that DL24 does not have charging/discharging function, some cannot be set)

(6. Voltage reference calibration, 7 current reference calibration, and 8 temperature reference calibration should not be set under normal circumstances!)

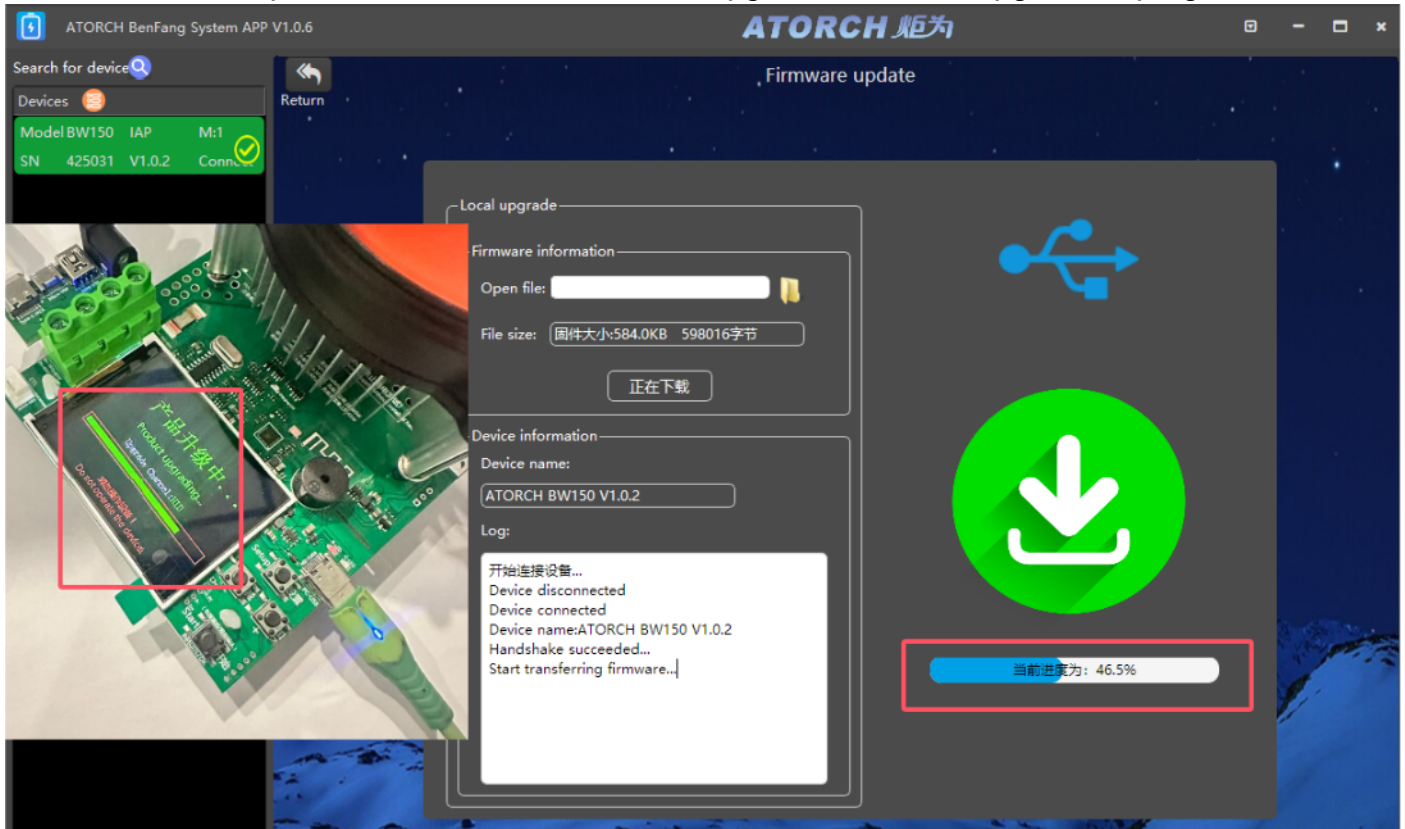


13.Upgrade firmware

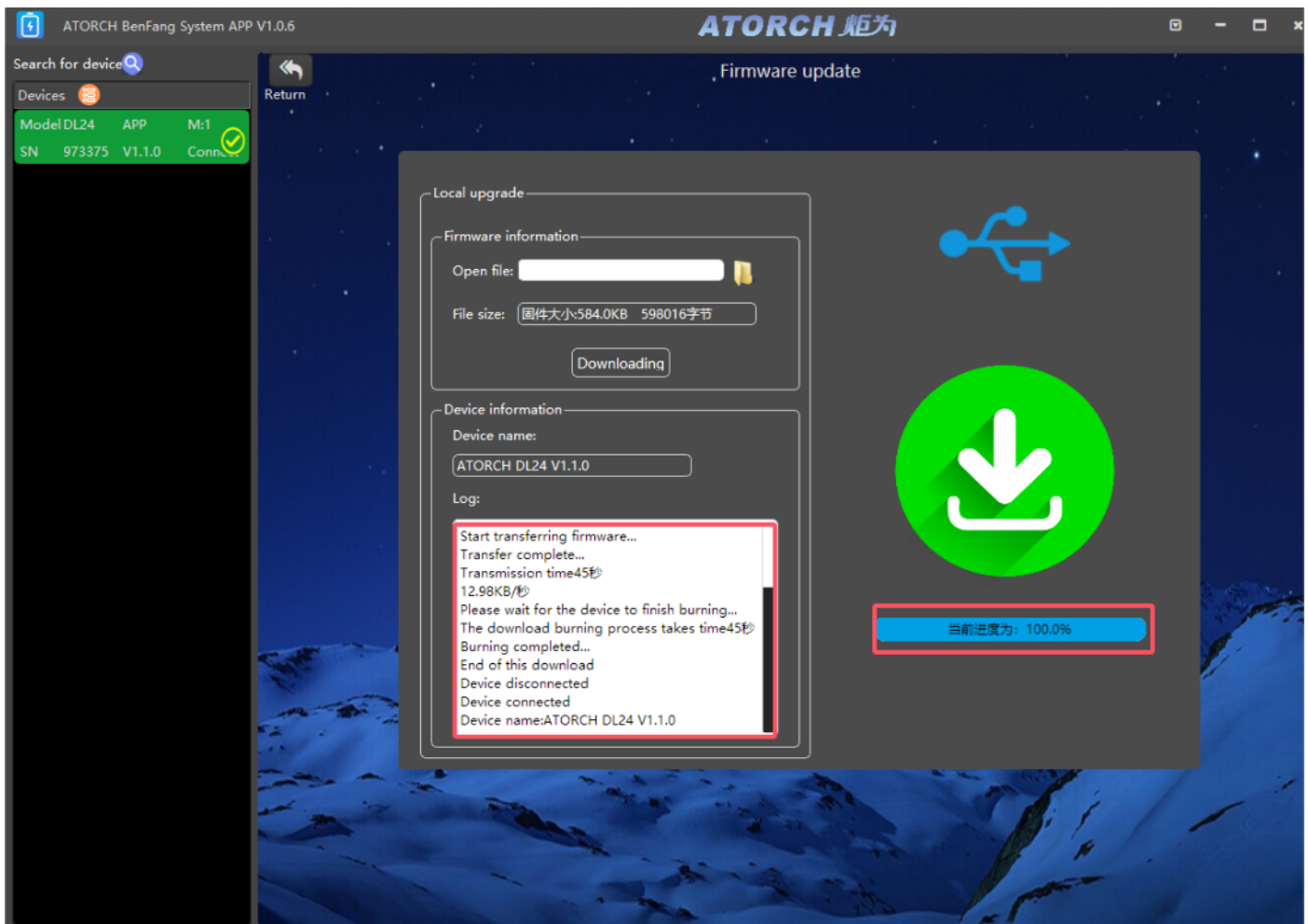
Click on the firmware upgrade option. Once there is a new firmware, as shown in the figure, you can select firmware upgrade



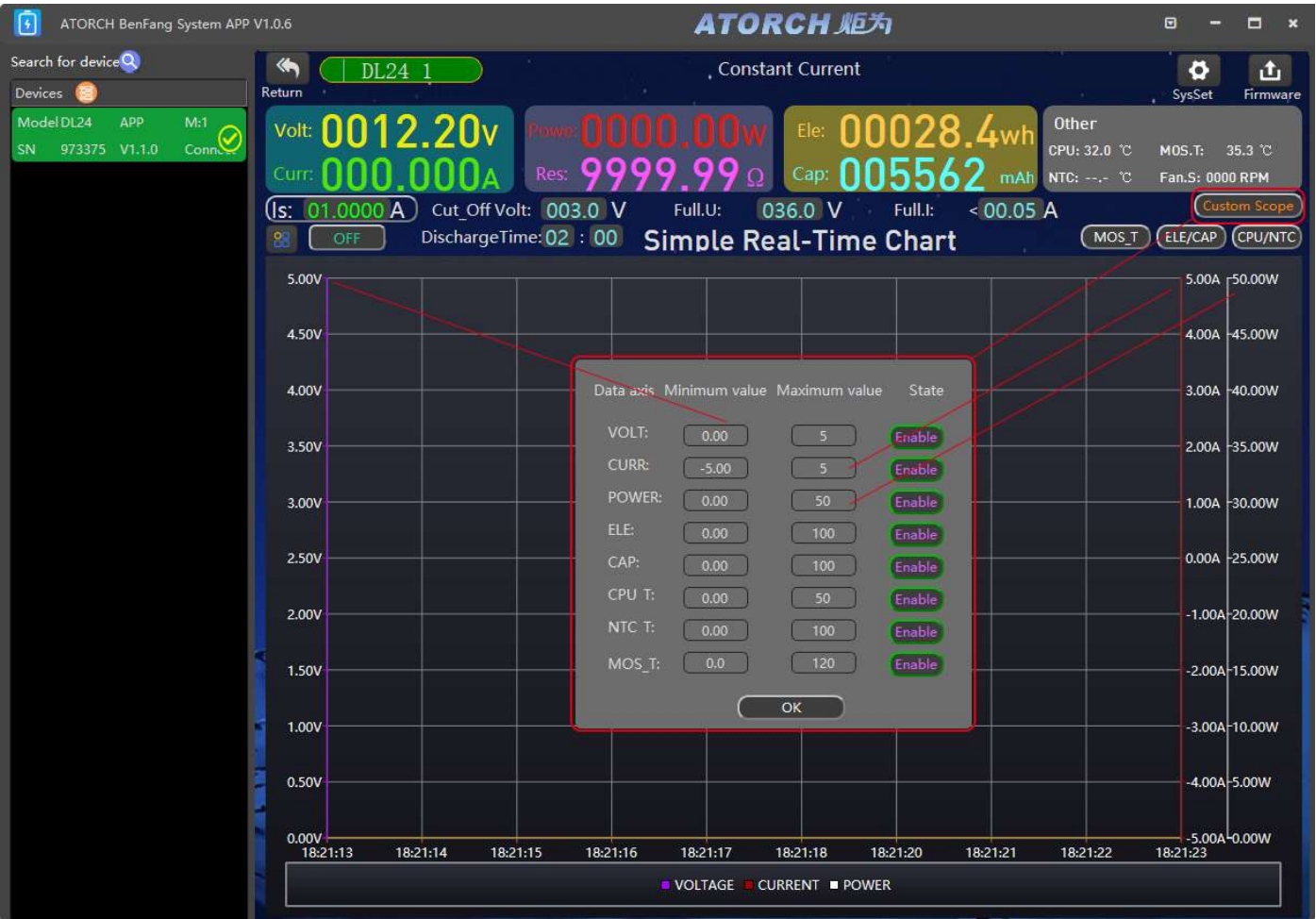
HID computer online cable for firmware upgrade, firmware upgrade in progress



Firmware upgrade completed



14. Curve parameter customization



At the end, there may still be shortcomings in this version of the electronic load software. Please provide valuable feedback for upgrading. Thank you!