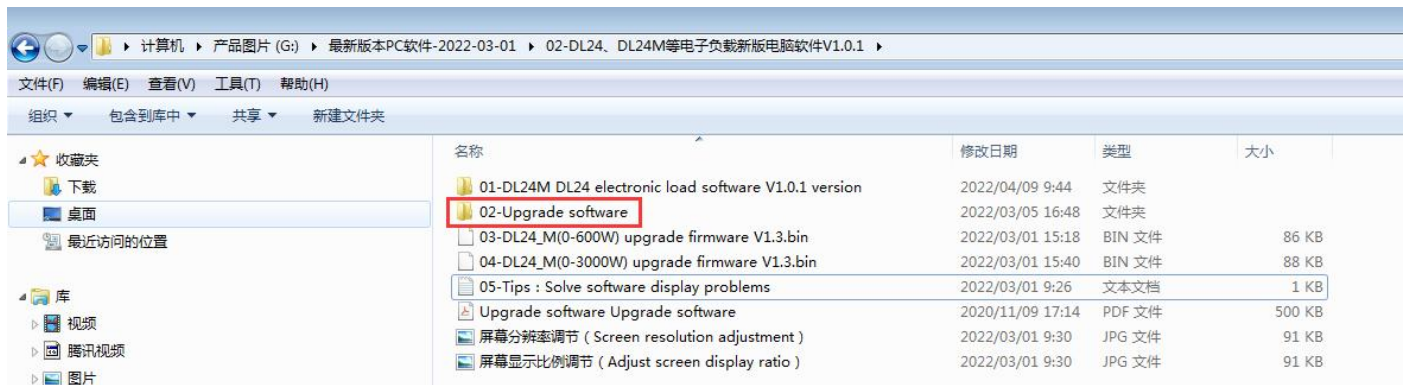
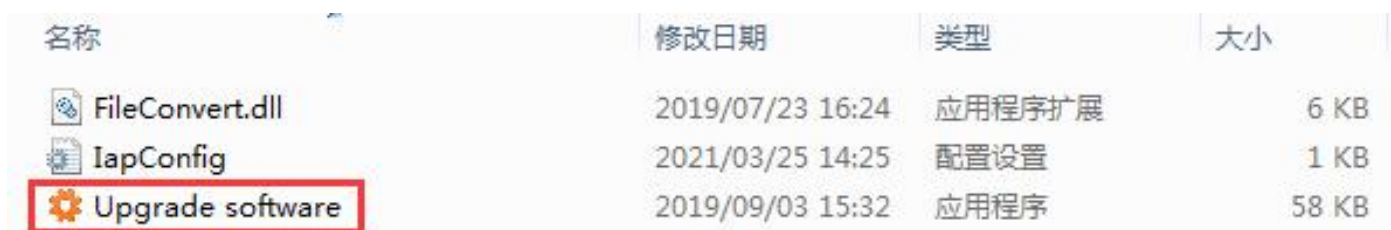


Upgrade firmware instructions

1. Download the software we provide and unzip the current file



2. open **02-Upgrade software** folder, and open our upgrade firmware software



3. After the software is opened, it will look like this:

1. The data interface (COM) between the product device and the PC
2. Firmware upgrade rate (Note: The baud rate can only be selected at 9600 and cannot be changed)
3. When the PC finds the power bank, configure the correct port and baud rate and click connect
4. 0x1000 must be filled in here and cannot be changed
5. Firmware upgrade program file path, select the .BIN firmware you need to upgrade
6. Transfer progress (0-100%)
7. Serial port (successful connection will be displayed after the match is successful)



4. Search product Bluetooth on PC (we take DL24M product as an example)

First of all, you need to prepare a computer that can connect to the Bluetooth SPP protocol. (WIN7 W10 desktop and notebook are both available. (If the computer has Bluetooth, but the power bank cannot be searched, the Bluetooth transmission protocol cannot be matched. The power bank Bluetooth only supports the SPP protocol. , the solution is to repurchase a Bluetooth adapter with SPP protocol)

Control Panel >> Hardware and Sound >> Devices and Printers



5. Open Devices and Printers and click Add Device



6. Select the Bluetooth name ending with _SPP for pairing



7. The input password is: 1234 or 0000



8. It can be viewed in the device manager, the paired serial port number is **COM28**



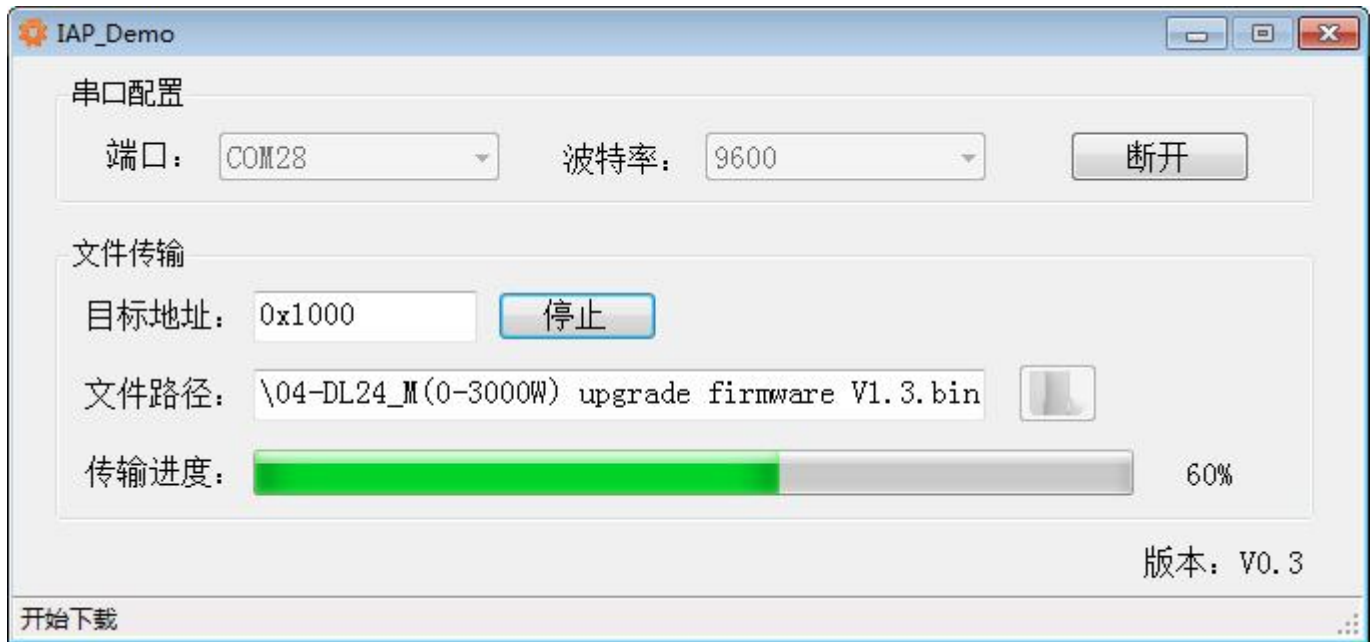
9. Open the upgrade firmware, click connect(2), select the serial port number COM28(1), and select the upgrade firmware(3)



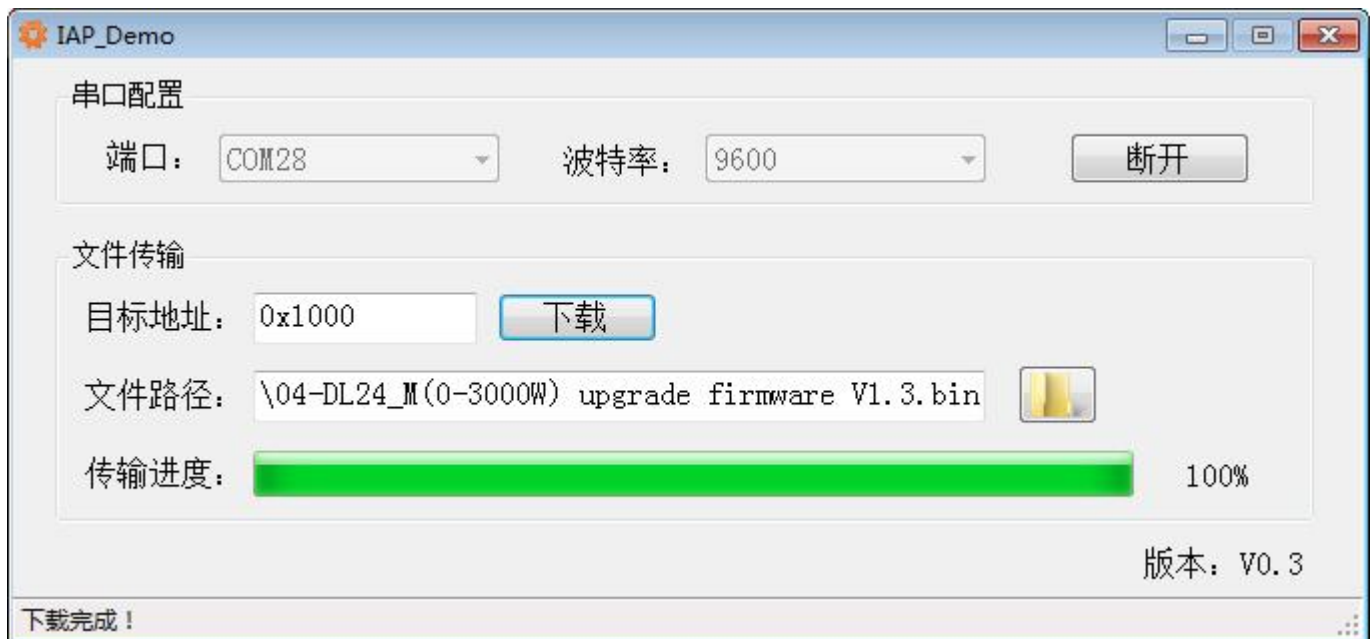
10. During the upgrade process, keep the device powered off, Bluetooth connection



11. Finally click download (4) until the green scroll bar reaches 100%

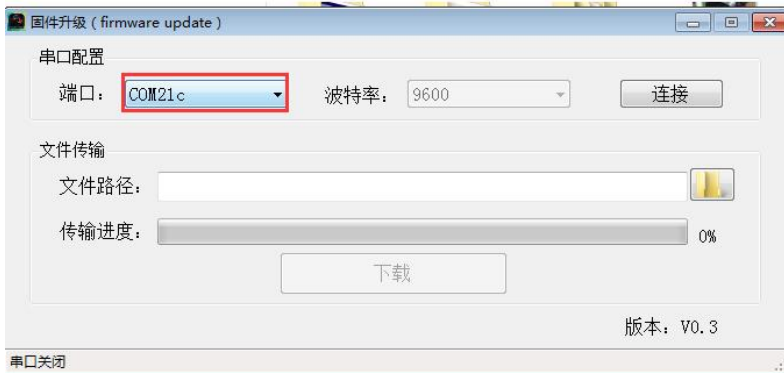


12. When the device is upgrading the firmware, the product screen will be turned off, **please do not power off, please do not power off, please do not power off**, until the upgrade is 100% successful, the screen will display!



The upgrade is successful, complete!

For some customers, the serial port number will be garbled, please reset the serial port number (COM) according to the following method, and then you can upgrade the firmware!



If the serial port number is garbled or has English numbers and cannot be selected when upgrading the firmware, then you need to change the serial port number, because the serial port number is occupied, you need to re-modify it to another serial port number!

