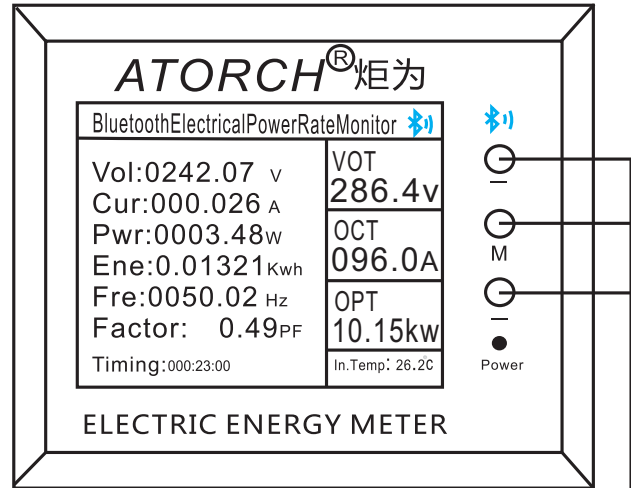
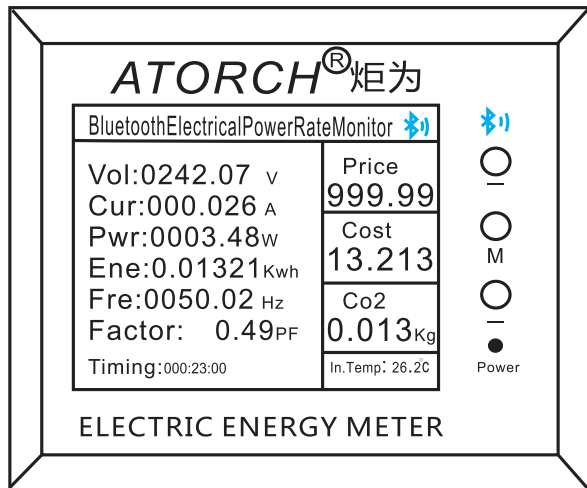
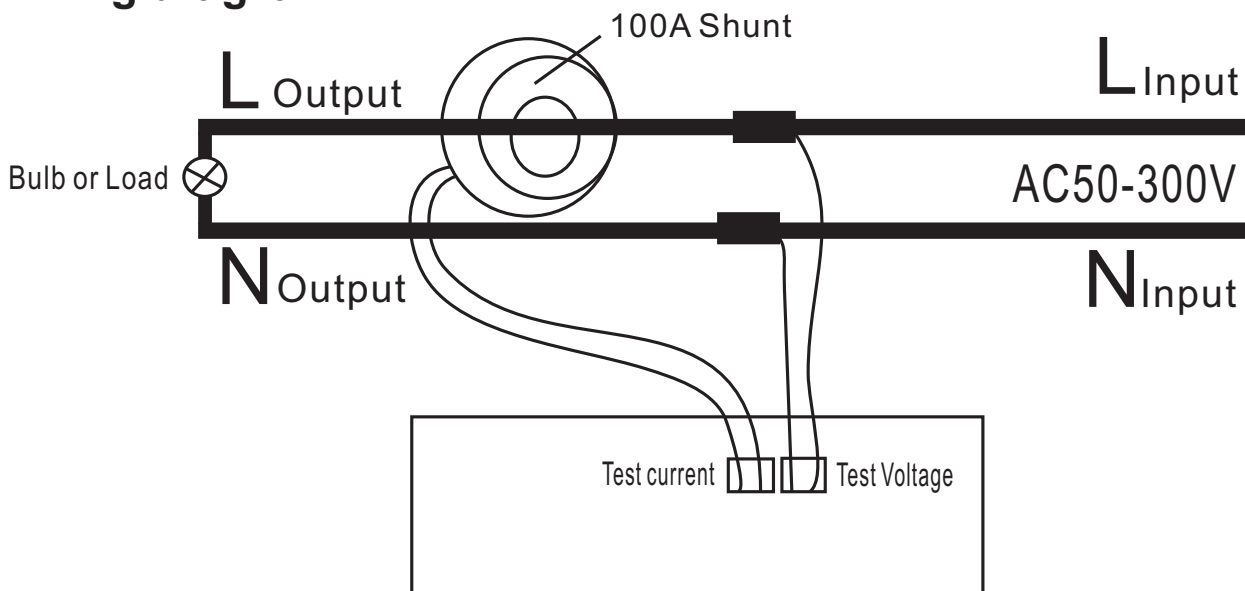


# AT24C/AT24C-B User manual



key button

## Wiring diagram



### Key operation:

1. Click the "+" or "-" button to switch the measurement interface!
2. Click the "M" button to enter the electricity price setting, the number on the screen will flash, set the electricity price setting through "+" or "-", long time press "M" button to confirm OK!
3. Long time press the "M" button to enter the background, you can set the product's over power, over voltage, over current and data reset zero!

### AC meter electrical parameter:

Voltage measurement range: 0050.00V~0300.00V Resolution accuracy: 0.01V

Current measurement range: 0.000A~100.000A Resolution accuracy: 0.001A

Power measurement range: 0000.00W~300000W(0030.00kw) Resolution accuracy: 0.01W

Power accumulation range: 0.00000 ~99999.9(Kwh) Resolution accuracy: 0.00001 Kwh

The total range of electricity charges: 0.0000~9999.9 \$ Resolution accuracy: 0.001 yuan or other countries

Electricity price setting range: 000.00~999.99 \$ Resolution accuracy: 0.01 yuan or other country

Carbon dioxide range: 000.00~999.99Kg (KWh\*997/1000 5/3 bit switch)

Temperature measurement range: 0~099.9°C Resolution accuracy: 0.1 °C

Standby power consumption: <0.5W~1W

Refresh time: >500mS/time> 500mS/time

Measurement rate: about 0.5 times / sec

Display type: micro-power HD 2.4" module black font green backlight Chinese and English display

Product size: 85.7 x 63.0 x 23.7mm

Working temperature: -10~+60°C

Working humidity: 10~80 (no doubt exposed) 10~80 (no doubt)

Working pressure: 80~106kPa