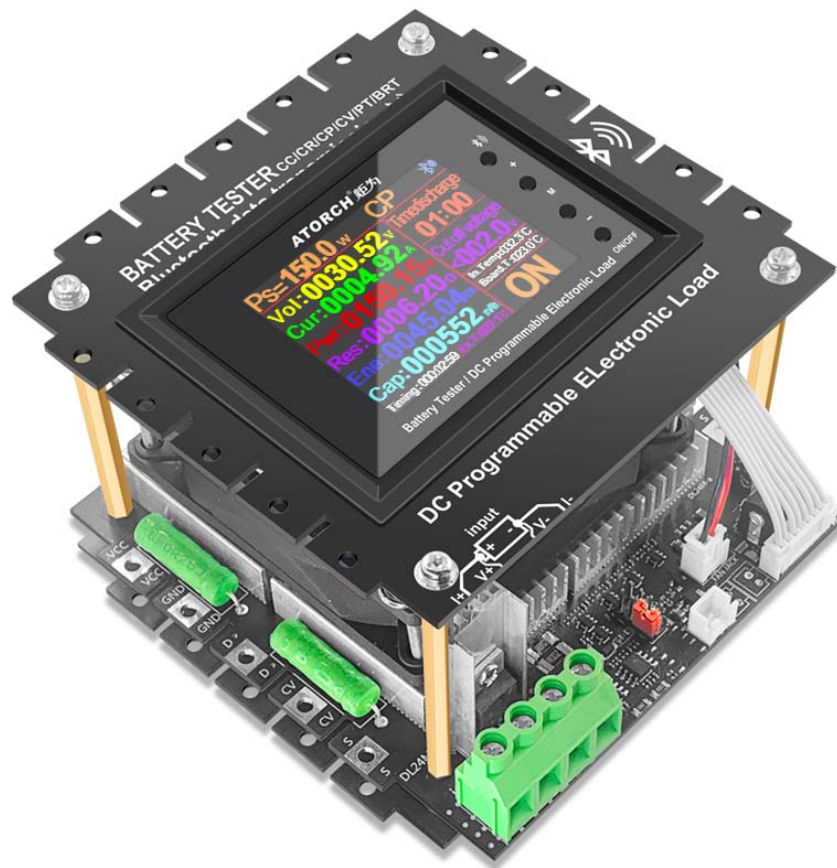


# DL24MP - 150W - H User Manual

2.4-inch HD color screen Bluetooth digital transmission curve version  
battery capacity / DC power multi-function tester



(This product will be updated at any time, please pay attention to the web page description for detailed update details)

## Product parameters:

Test voltage:2~200V

Working current:0.2~20A

DL24 Discharge power: voltage \* current < 150 W

(The actual running current is limited by the maximum power, please adjust the current according to the law of energy conservation)

The built-in over-current, over-temperature, over-power safety protection functions, if the protection interface is popped up, please pay attention to the parameter adjustment, shall adjust to the maximum power, and then discharge, you can first slowly and smoothly adjust the preset value in the start and discharge, in order to adjust up to the maximum power for discharging

## 2.Product application:

### 1.1 Battery capacity test

The tester is designed for the discharge of various batteries,18650 battery,car battery including NiMH, NiCd, LiPo, LiFe and Pb, as well as capacity testing.

### 1.2 Mobile power test

This tester supports discharging of mobile power supply and capacity test.

### 1.3 Power performance test

The tester supports performance and aging tests of various DC power supplies.

(2):

2.1 Power supply: DC 12V/1A

2.2 Voltage range: 0-200.00V, step 0.01V

2.3 Current range: 0.010-20.00A, step 0.01A (the current is automatically adjusted according to the power limit)

2.4 Discharge method:

CC: Constant current discharge of the battery, which supports testing of battery capacity or power supply current.

CP: Discharge the battery with constant power for use or test power such as constant power equipment.

2.5 Discharge power:150W

2.6 Four wires: voltage and current channels are separated, with high test accuracy

2.7 IPS display: voltage, current, time, capacity, power, electric energy, etc.

2.8 PC connection: The tester can be connected to the computer through Bluetooth to achieve more functions, such as graphics, calibration, firmware upgrades, and test cycles.

### 3.Function interface introduction:

This product adopts the high-end and cost-intensive "2.4-inch high-definition large color Chinese and English display screen", designed a variety of functional interface content, Various parameters are displayed on one screen, and different function interfaces can be switched by short pressing the button. The interface diagram and introduction are as follows



## --Key Button operate Description--



- 1) Short press the "ON/OFF" button to start and stop, short press the upper left corner of the "M" button to move the cursor and then adjust the corresponding value with the "+/-" button
- 2) Long press the "+/-" button at the same time to clear all accumulated data such as the current capacity, battery time, etc. (Long press the "ON/OFF" button to enter the background, also can be cleared in the background menu)
- 3) Long press the "M" button and the function mode starts to flash, then short press the "+/-" button to select the function (CC/CV/CR/CP/BRT/PT)

- 4) In OFF mode, long press the "ON/OFF" button to enter the background interface, then short press the "M" button to switch the setting column, and the "+/-" button to adjust the number
- 5) Short press the "+/-" button in the constant current accuracy column of the background setting interface to switch the constant current accuracy (10mA Or 1mA)
- 6) When the system is not supplying power, press and hold the "M" button and do not let go. Then power on again. Enter the splicing power option and jump to the actual power value before let go
- 7) Long press the "M" button the function mode starts to flash, short press the "M" button again to enter the setting adjustment value of the time-limited discharge and Cut off voltage column value

## --Panel Main buttons and description--



- I :Bluetooth indicator(Flashing waiting for Bluetooth connection,Long light indicates successful connection)
- II : "+" Valve Increase Button(Short press the button to increase the number, long press the button to increase continuously,When the mode is flashing, short press the button to cycle backwards)
- III: "M" Set Button(Long press "M" key to start function mode, press "+" or "-" key to switch CC/CV/CP/CR/BRT/PT mode, long press "M" key to start function mode, short press "M" again Key to switch between Time Discharge and Cut off voltage. Press the "+" or "-" key to set the value, the default is OFF)

IV: "-" Value Reduce Button(Short press the button to decrease the number and long press the button to decrease continuously. When the mode is flashing, short press to cycle forward)

V: "ON/OFF" Run ON/OFF Button(Short press the button, it is ON or OFF)

Long press the button to enter the product background settings, and use the "M" button and "+" or "-" button to set the parameters)

## --Host Parameters and description--



1. Test various DC power inputs
2. Mini USB detection port inputs
3. Micro USB detection port inputs
4. Type-c USB detection port inputs
5. DIY assembly Different power reserve jumper positions (150W/300W/450W/600W)
6. External NTC temperature probe
7. DC5.5 system power supply (must supply DC12V 1A)
8. 8p cable connected to the panel
9. Increase the power and expand the interface

## 4. Two kinds of 1mA or 10mA current test gear

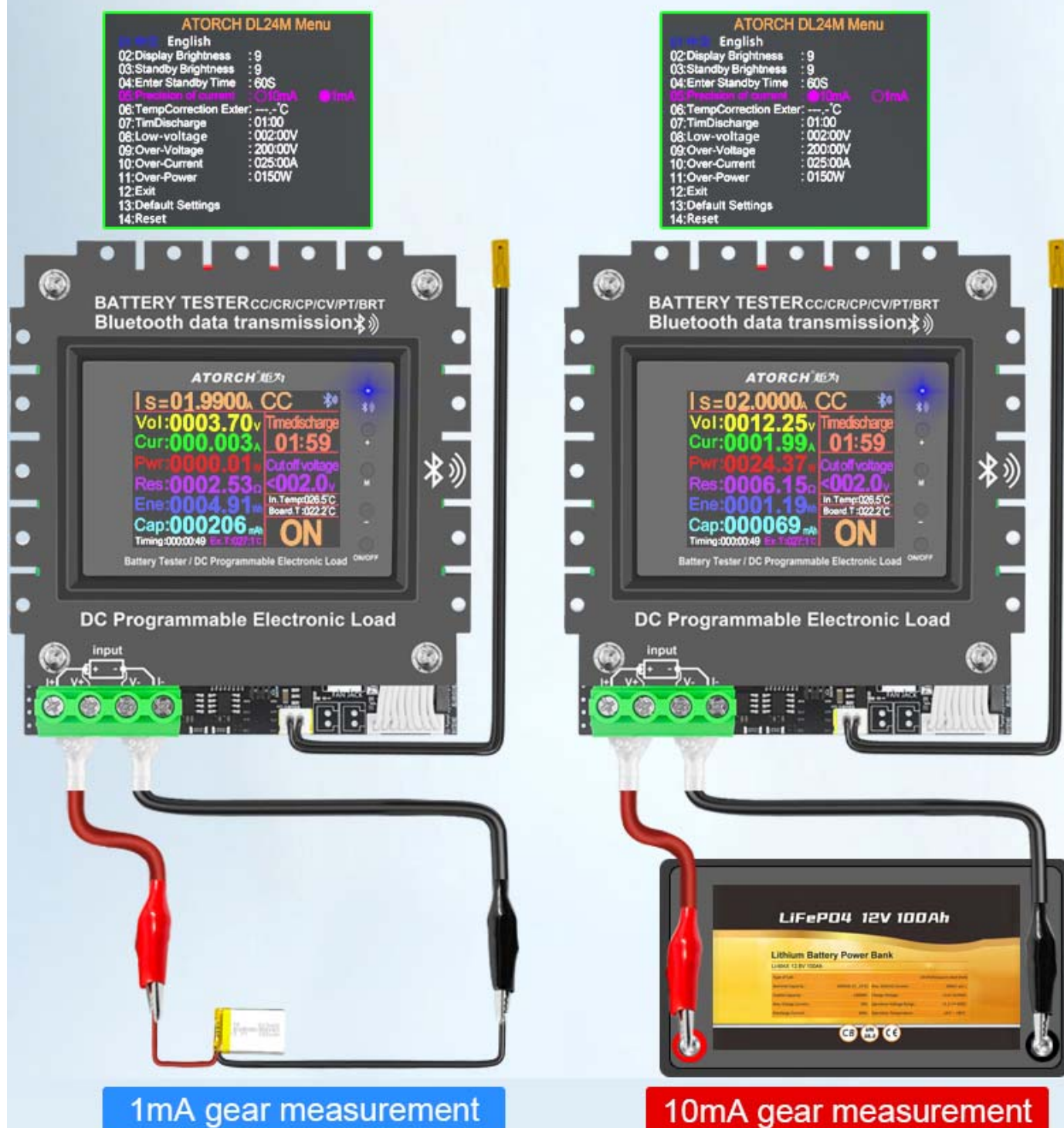
Operation method: Long press the "ON/OFF" Button to enter the background, press the "M" Button,

select 05 item: Precision of current: 010mA ● 1mA, set by "+" or "-"

(Tips: Start the test with a minimum of 3mA)

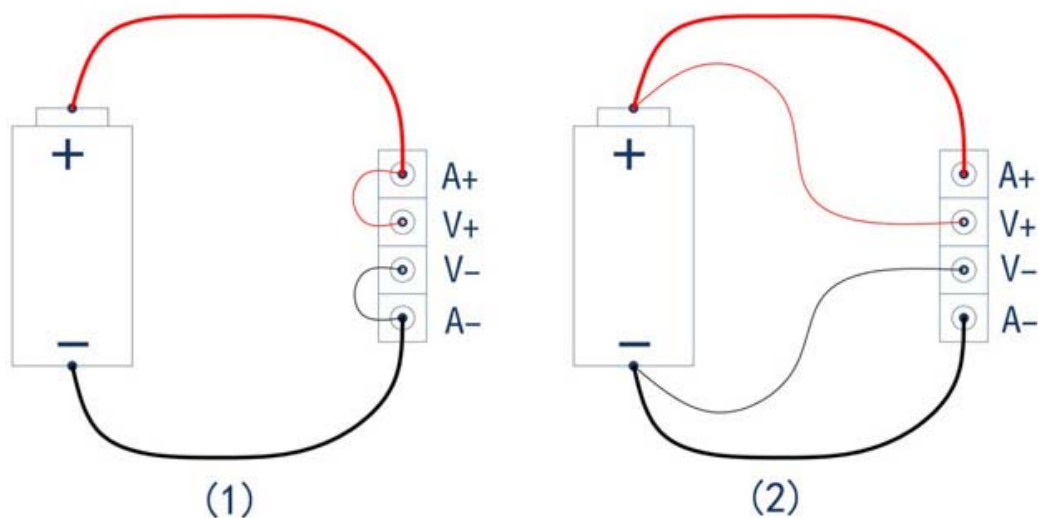
## Meet the measurement of small-capacity batteries

Increase the coarse and fine current constant current gear setting



## 5. Two test wiring methods

# Electronic load wiring diagram



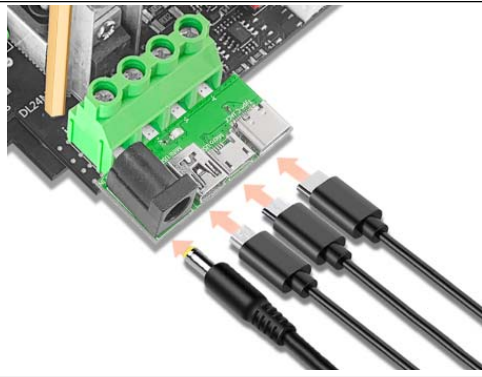
- (1) **Two-wire wiring method:** this method is relatively simple and convenient.  
Note: It must be connected to the 2 terminals [A+] and [A-].
- (2) **The four-wire wiring method:** the voltage measurement is not affected by the voltage drop of the wire, so that the voltage measurement. The quantity is more accurate, and it is recommended that buyers with a certain circuit basis use this method!

## 6. Test all kinds of batteries



Test all kinds of batteries

## 7.Test all kinds of data cables/chargers



Test/discharge/aging/get it all  
Play and test various USB data cables/chargers, first use a data cable  
Connect the corresponding interface of the load, connect as shown in the figure below, when the load is turned on in the constant current mode  
Adjust the current so that the voltage drop is 1V less than the no-load condition  
The current value at this time is the current value of the measured data line

## 8.Through testing various DC power adapters



Play and measure the current, voltage, power and other parameters of various DC power adapters  
Use the DC power supply to connect the DC independent power supply port of the load meter, and then use the "Settings" button to connect as shown in the figure below.  
Precisely adjust the current to test the voltage and rated current of the power supply  
The DC power supply can also be aged for a long time, with strong functions, simple operation, convenient and quick testing

## 9.Intelligent one-key full automatic detection of DC power supply



PT mode of charger current power performance  
Press and hold the M button in the menu until the mode bar flashes, wait a while after pressing the ten-key PT mode Automatically enter the DC power supply/charger auto-detector mode, then plug in your tested power supply and Charger, then short press the start button, it will automatically start to run for a period of time and then report Displays 4 kinds of important numerical results, making complicated tests instantly simplified, accurate, and easy to use.

## 10.Test all kinds of power bank capacity



Test all kinds of power bank capacity

## 13. Compatible with the current mainstream four online APPS

### (Android/IOS/PC system) Online Testing

#### DT24 Color Voltmeter Wireless Bluetooth Online Operation Diagram

##### Mobile APP interface function introduction

Use the mobile phone Bluetooth function to wirelessly connect the product, with the included mobile APP software. Achieve more measurement and control details, leaving measurement technology without boundaries.

We have adopted the Bluetooth 4.0, compatible with 4.0 networks, using more advanced technology of Bluetooth 4.0, improved the old Bluetooth protocol and 4.0 network interface with each other. New Bluetooth 4.0 technology three automatic noise reduction function, and make the Bluetooth protocol can connect two phones at the same time. And Bluetooth 4.0 technology, more performance, and compatibility, low power consumption to meet your needs.



1. Plug **DT24 Voltmeter** into the USB charger and the Bluetooth indicator will light up.



2. Please download the mobile app software, only support Android 5.0 and above.

<https://www.mediafire.com/folder/31bc15uhq8odb/E-meter>

Then install the E-meter APP software on the phone.



3. Bluetooth on the phone needs to be turned on, Then open E-test APP on the phone



1

When the USB tester is powered on, the Bluetooth indicator is flashing, turn on the E-test App software icon, and allow Bluetooth to turn on.



2

Click the Bluetooth icon in the upper left corner of the APP to pop up the menu for selecting the USB tester model. **DT24-BLE** return to the main APP interface.



3

During the measurement, the upper right corner shows the model currently online. **DT24-BLE**. The bluetooth icon in the upper left corner turns blue, indicating that the measurement is in online communication.

## 1) Apple Mobile APP:

Please search for **E\_test** in the **Apple store** to download and install, then click the Bluetooth APP icon to open the software, and then click the Bluetooth icon above the software to enter the selection DL24M-BLE to connect, you can achieve mobile phone remote wireless remote control settings and Measurement function, the discharge status can be viewed at any time on the mobile phone, various data cleaning is visible, the voltage and current power curve of the discharge, etc.

## 2) Android phone APP(Only support Android 5.0 and above):

Scan the QR code on the back of the host to download the corresponding APP software or Android APP: search **E-test** at Google play to download. After the installation is complete, open the software and click the Bluetooth icon to enter the direct selection of DL24M-BLE to successfully use it online. (No need for Bluetooth pairing, the software Bluetooth icon directly selects DL24M-BLE. can)

Android APP Download Address: <http://www.mediafire.com/folder/31bc15uhq8odb/E-meter>

## --App Connection Method--



Please click this "E-test" APP to open the software



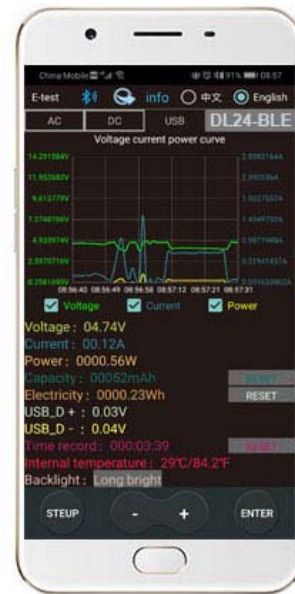
1

When the USB tester is powered on, the Bluetooth indicator is flashing, turn on the E-test App software icon, and allow Bluetooth to turn on.



2

Click the Bluetooth icon in the upper left corner of the APP to pop up the menu for selecting the USB tester model, **DL24-BLE**, return to the main APP interface.



3

During the measurement, the upper right corner shows the model currently online. **DL24-BLE**. The bluetooth icon in the upper left corner turns blue, indicating that the measurement is in online communication.

If you find that you have turned on Bluetooth and the display list is blank, please open your GPS location or E-test's location information and storage information permissions, log out again, and then try to connect again!

*If it appears blank and no list is displayed, please turn on GPS positioning in your phone settings*



1



2 Turn On GPS



3

# How to find the Bluetooth symbol in E-Test APP

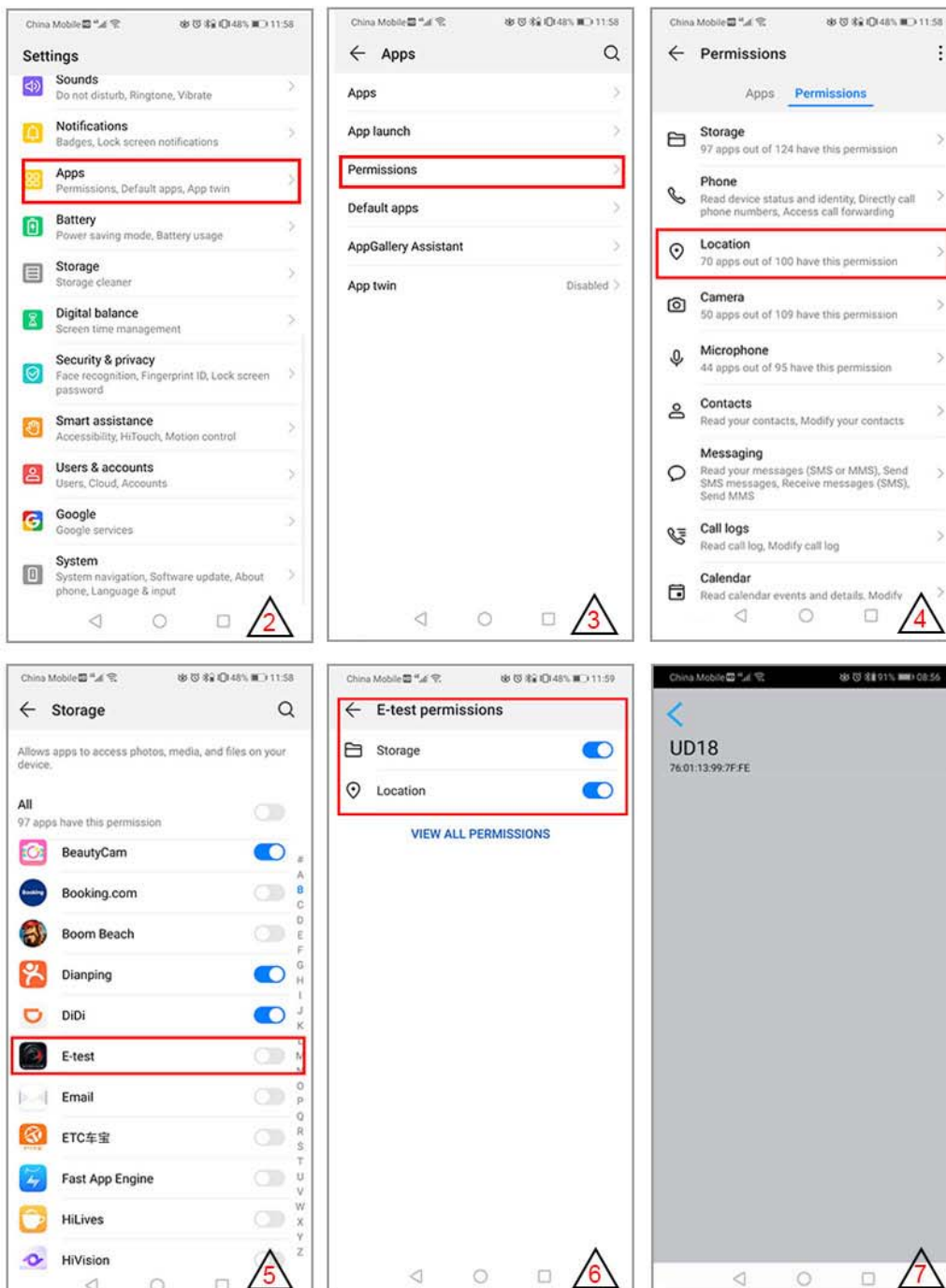
This operating instruction applies to all the company's Bluetooth products  
(UD18/DT24/DL24/AT3010/DPT3010/T18... etc.)

Please open your phone, **Setting**>>find the **Apps**>>manage the **Permissions**>>**Location**>>find our **E-test app**>>find the **storage information** and **location information**>>open the permissions **allow**, you can find us bluetooth symbol In the E-test list.



1 Please open your phone settings

Click settings

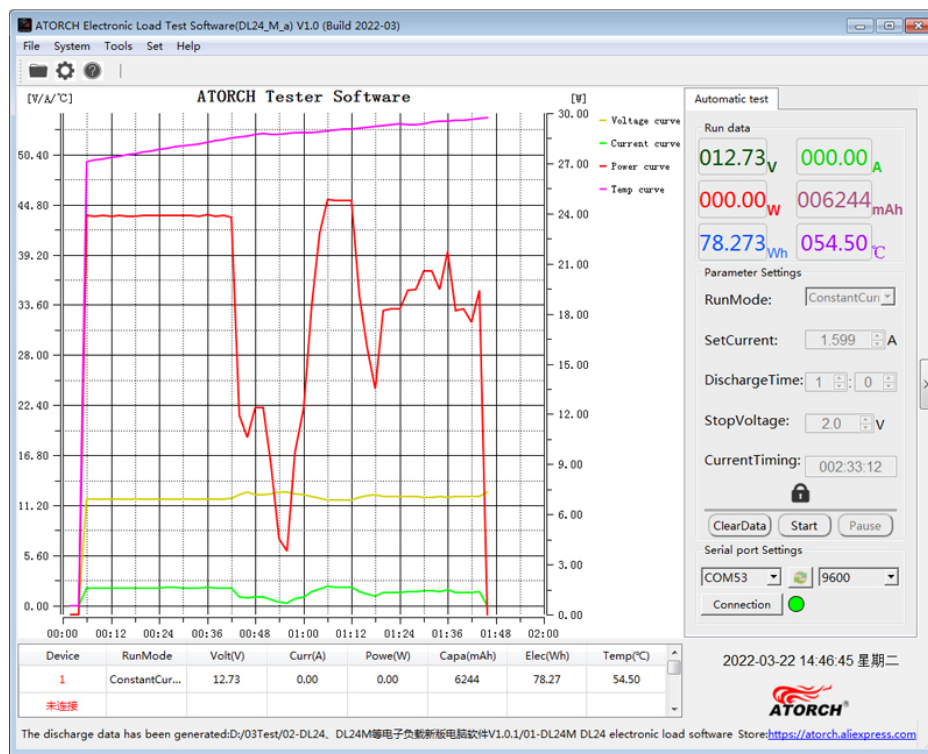


### 3) Computer Bluetooth wireless online APP:

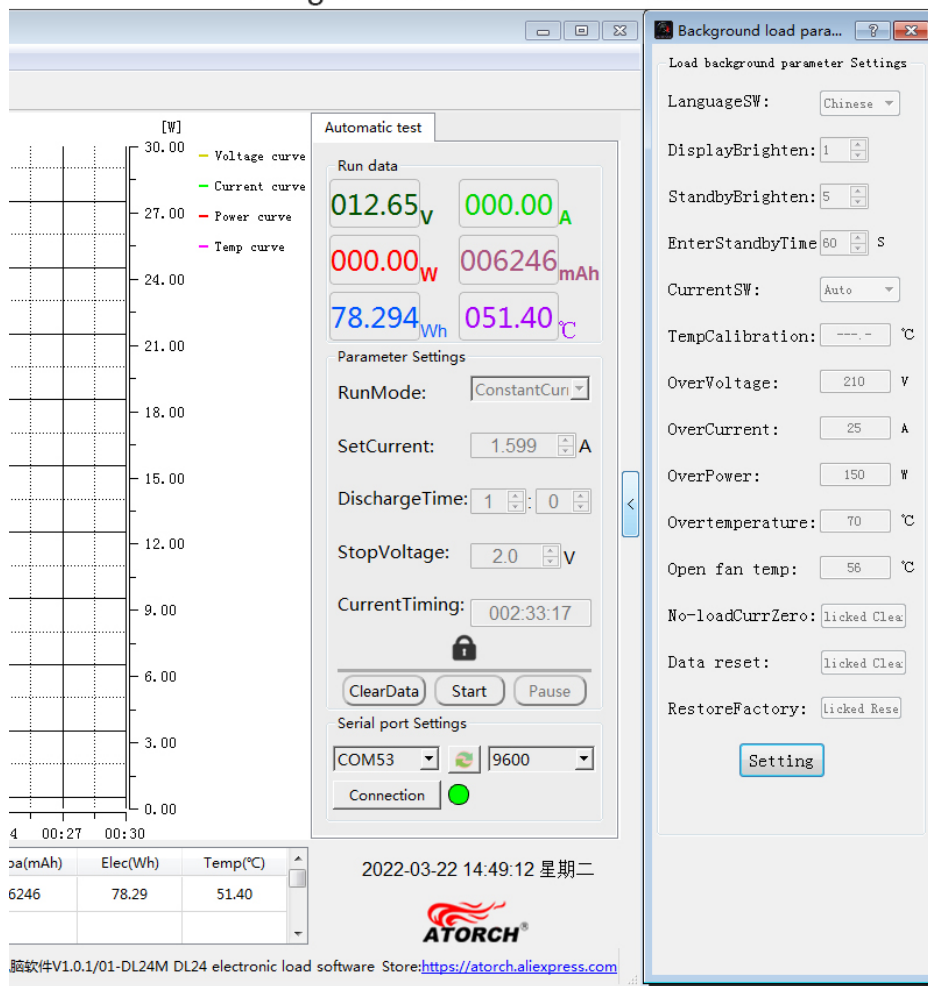
First add the Bluetooth device to the serial port device of DL24M-SPP on the computer, then scan the QR code on the back of the host to download the corresponding APP software and store it. Open the software without installing and select the Bluetooth serial port model just added. You can successfully use online

[https://www.mediafire.com/file/sxpzzzwdwvons9w/DL24\\_series\\_electronic\\_load\\_software\\_V1.1\\_version.zip/file](https://www.mediafire.com/file/sxpzzzwdwvons9w/DL24_series_electronic_load_software_V1.1_version.zip/file)

### New version of electronic load software

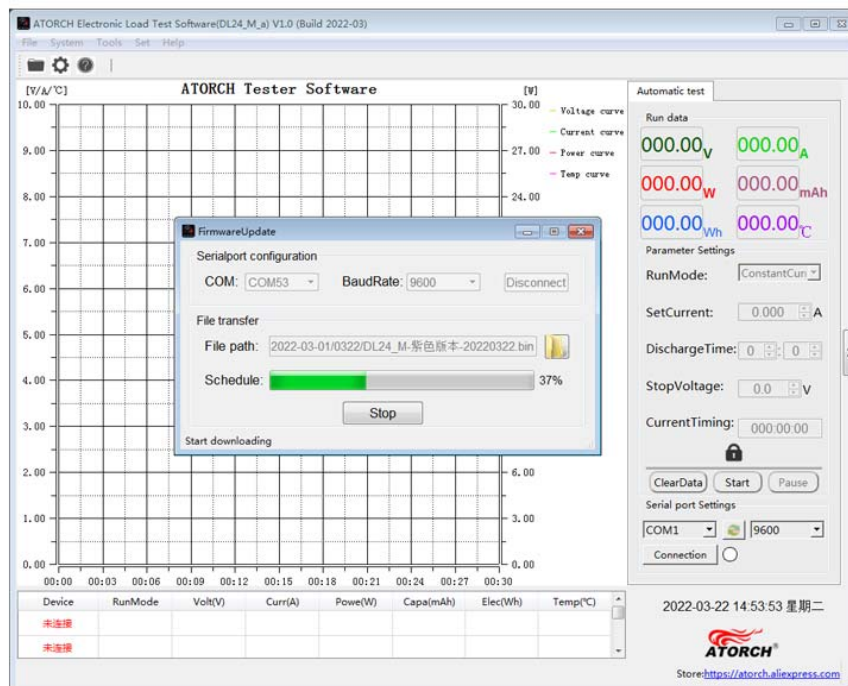


### Background software can be set



## 14. Firmware upgrade

# Firmware upgrade

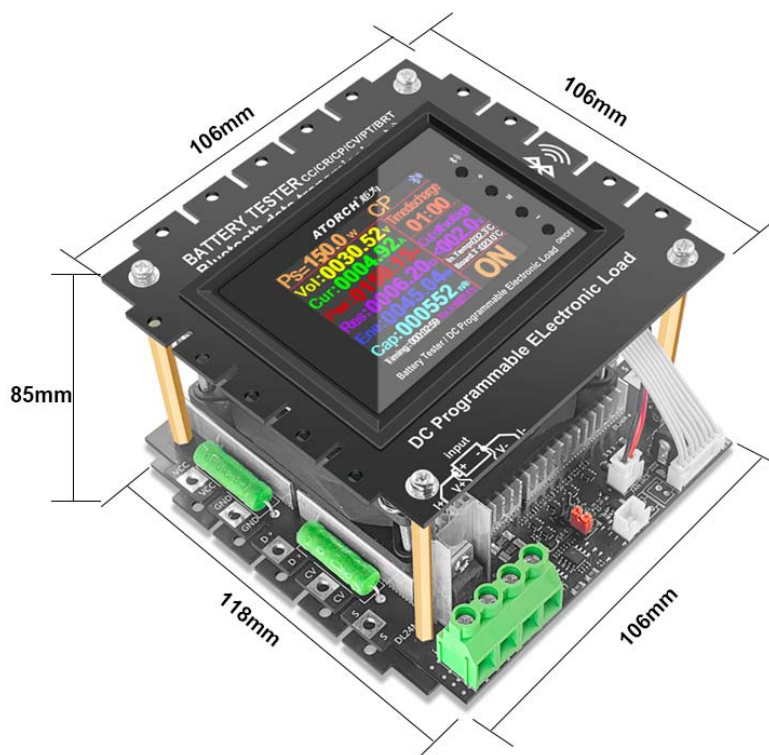


## 15. Product Size

Size above(length x width):106mmx106mm

Size below(length x width):106mmx118mm

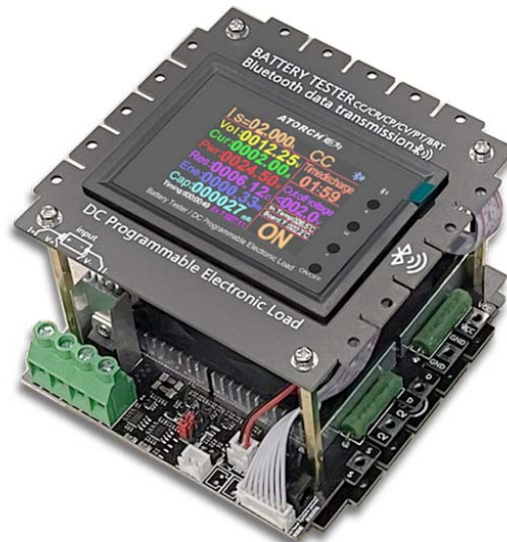
High:85mm








## IV.Product List

- 1.Black DL24MP-150W Color Display Bluetooth Digital Control Curve Version Load Tester x1
- 2.DC12V 1A power supply x1
- 3.Temperature probe x1
- 4.Red and black single line crocodile clip line x1
- 5.US to EU adapter x1

Products list



X1PCS	X1PCS	X1PCS	X1PCS	X1PCS
				
DC Power	Alligator line 10A	Temperature probe	US to EU adapter	Adapter board